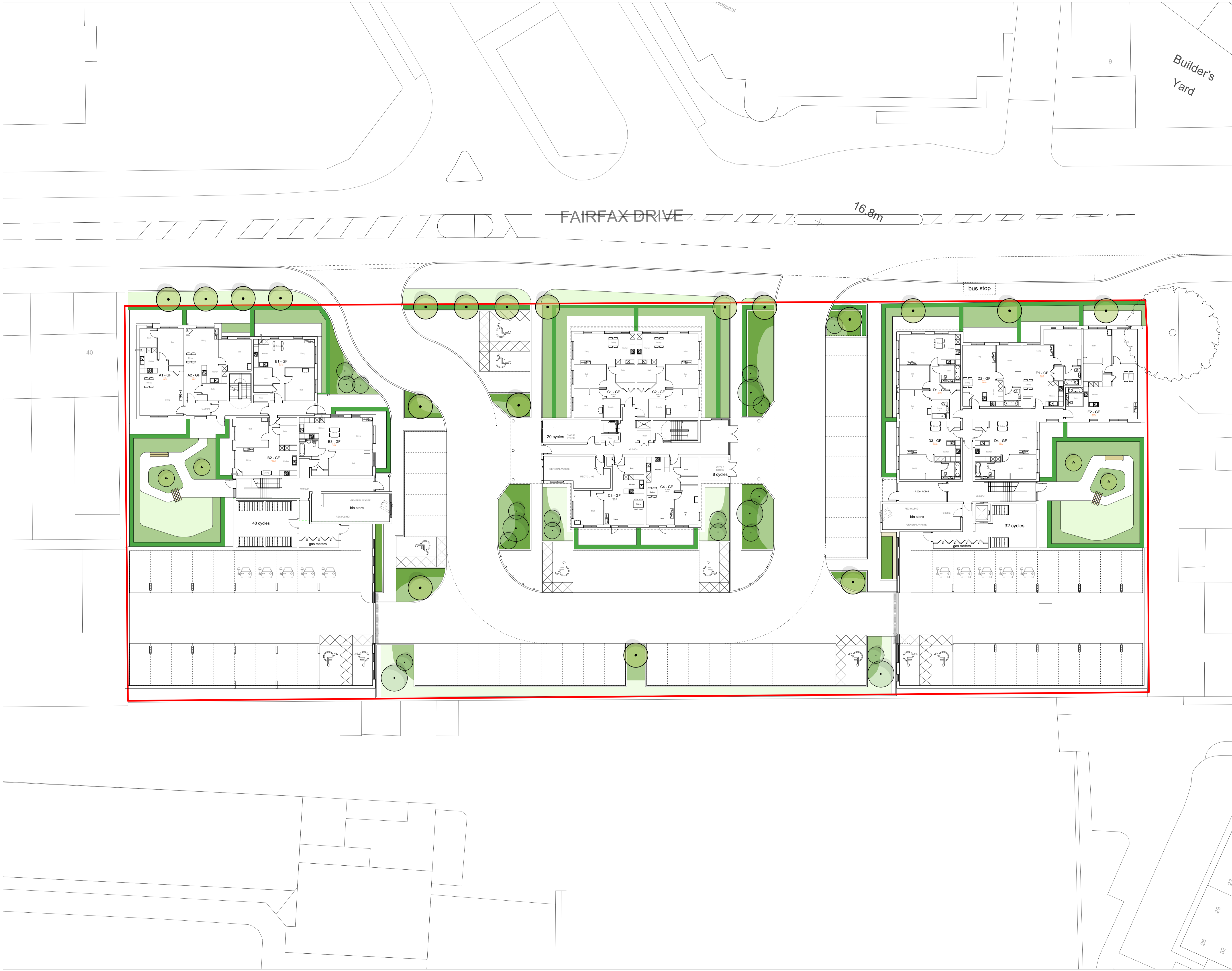


THIS DRAWING IS COPYRIGHT PROTECTED AND MAY NOT BE REPRODUCED IN WHOLE OR PART WITHOUT WRITTEN AUTHORITY FROM THE OWNER.

- NOTE:**
- Do not scale from this drawing.
 - Always work to noted dimensions.
 - All dimensions are in millimetres unless otherwise stated.
 - All setting out, levels and dimensions to be agreed on site.
 - The dimensions of all materials must be checked on site before being laid out.
 - This drawing must be read with the relevant specification clauses and detail drawings.
 - Order of construction and setting out to be agreed on site.

SOFTWORKS KEY

- Retained Existing Trees**
Location: Site Wide
Note: Protected in accordance with BS:5837
- Proposed Semi Mature Tree Planting**
Location: Site Wide
Species: refer to Planting Schedule
Note: Planted with approx 1.2m deep imported topsoil, underground guyed connected to drainage system as required.
- Proposed Extra Heavy Tree Planting**
Location: Site Wide
Species: refer to Planting Schedule
Note: Planted with approx 1.2m deep imported topsoil, underground guyed connected to drainage system as required.
- Proposed Multi-Stem Trees Planting**
Location: Semi Private Courtyards
Species: refer to Planting Schedule
Specification: 3-4m in height. Planted with approx 750mm lightweight roof soil, subject to further details. Note: Loadings Subject to Engineers Details
- Structural Shrub Planting**
Location: Sitewide
Species: refer to future Planting Plan
Rootball and containerized stock planted at 5/7/9m2
- Ornamental Shrub & Herbaceous Planting**
Location: Sitewide
Species: refer to future Planting Plan
Rootball and containerized stock planted at 5/7/9m2
- Evergreen Hedge Planting**
Location: Sitewide
Species: refer to future Planting Plan
Planted into 450mm minimum topsoil
- Lawn Areas**
Location: Sitewide
Laid over 200mm min imported topsoil to BS:3882



Issue	Date	Status	Drawn	Apprvd.
02	18.10.18	Tree location update	HS	JK
01	25.09.18	Architectural update	HS	JK

Planit I.E. Limited
 E: info@planit-ie.com W: planit-ie.com
MANCHESTER 2 Back Drafton St Altrincham WA14 1DY T: 0161 928 9281
LONDON Unit 6 Waterside 44-48 Wharf Road London N1 7UX T: 0207 253 5678

Client Weston Homes
Project Prospect House, Southend
Drg Title Landscape Softworks
Created on 14.06.17 **Created by** HS **Approved by** DF
Scale 1:200 **Size** A1 **Status** PLANNING
Drg No. PL1610.1.GA.102 **Issue** 02